



23-26

March 2026



Online & in Oxford

CAREERS BEYOND ACADEMIA

Options and Pathways for Researchers

Careers conference for Oxford University **research staff** and **DPhil students** looking to explore roles beyond academia and the routes towards them.



PANEL TALKS with PhD holders and former academic researchers now working in a variety of sectors.



WORKSHOPS to identify skills and strategies for optimising career preparedness.



In-person **CAREERS FAIR** and **NETWORKING**

www.careers.ox.ac.uk/beyond-academia

Sponsors



Welcome to

CAREERS BEYOND ACADEMIA: Options and Pathways for Researchers

Welcome to our annual careers conference for DPhil students and Research Staff who are curious about, or already decided on, working in careers beyond academic research.

With 22 events over four days, the conference aims to help generate new careers ideas, gather information to support certainty for decisions, and identify clear next steps to turn theory into reality.

- **Our career insight panels** feature PhD-holders across disciplines to share their experience of new sectors of employment. They will share their honest experiences and advice for pursuing careers beyond academic research, and you will have plenty of opportunities to ask your questions to the panellists.
- **The career skills workshop series** builds from identifying what we need in our future lives and careers, to using methods for researching career options in detail to ensure they align with these needs. Workshops will also support you in first translating your research experience to appeal to employers beyond academia, and then creating effective CVs and Cover Letters to secure that next step.
- **The Careers Fair for Researchers** closes our week of events, providing the opportunity to connect with recruiters specifically seeking candidates with research experience and skills. Many former researchers now working in a range of sectors beyond academia will also be in attendance, providing a fantastic opportunity to ask for advice and insights into the realities of new roles.

Research has equipped you with strong technical and transferable skills that employers value. Let the panels inspire, the skills workshops prepare, and the Fair connect you with possible exciting future steps in your careers. We hope you enjoy this space to explore.

Dr Chris Jeffs, Dr Sara Falcone, & Dr Susan Black

Careers Advisers and Conference Coordinators

Oxford University Careers Service

OVERVIEW

Monday 23 March

- 5 KEYNOTE Get Your Ducks in a Row – Understanding What you Want from Life After Your PhD or Postdoc
- 5 Mental Health and Resilience – Finding Supportive Employers and Maintaining Wellbeing
- 6 Using Research Skills for Careers in Policy
- 7 Careers in Charities and Not-for-profits
- 8 Career Options for Staying at Oxford University Beyond Research
- 9 Patents and Intellectual Property Law

Tuesday 24 March

- 12 Education Careers for Those Who Love Teaching More Than Research
- 13 Careers in Medical and Healthcare Communications
- 14 Moving beyond academia: where to find new career options
- 15 From Academia to Quantitative Finance
- 16 Careers in Consulting for Researchers
- 17 Introduction to Industrial Research & Development

Wednesday 25 March

- 20 Careers in Tech: AI/ML, Software and Consulting
- 21 From PhD to Publishing
- 22 Careers in the Creative Industries
- 23 Translating Research Experience for Non-academic Employers
- 24 Scientific Research & Development in Industry: Panel Discussion
- 25 Careers in Research Funding

Thursday 26 March

- 28 Introduction to International Development and Diplomacy
- 28 Creating CVs and Cover Letters for careers beyond academia
- 29 Recruiter Panel: Advice from the People Reviewing Your Applications
- 30 Careers Fair for Researchers

ORGANISATIONS AT THE FAIR:

- | | | | |
|----|--------------------------------|----|--|
| 31 | Aspire Scientific | 38 | MATS Research |
| 31 | Aurora Energy Research | 39 | OxRSS |
| 32 | Axiomise Ltd | 40 | Medpace |
| 32 | Costello Medical Consulting | 40 | Microsoft |
| 32 | d-fine | 40 | Oxford International Centre for Publishing and Journalism, Oxford Brookes University |
| 34 | EnSpire Oxford | 42 | Oxford Dynamics |
| 34 | G-Research | 42 | Susquehanna |
| 34 | Inframatic Engineering Limited | 44 | Technische Universität Braunschweig |
| 36 | GSA Capital | 44 | The Innovation Game (Uncharted Industries) |
| 36 | iSAM | 44 | TNG Technology Consulting UK |
| 38 | Jane Street | | |
| 38 | KLA | | |

Events on
MONDAY
23 MARCH
2026



GET YOUR DUCKS IN A ROW: UNDERSTANDING WHAT YOU WANT FROM LIFE AFTER YOUR PHD OR POSTDOC

16:15 – 17:15

KEYNOTE: DR HOLLY PRESCOTT, POST-PHD CAREERS SPECIALIST

What do 50 tiny plastic ducks have to do with careers...? Find out at this keynote session.

Navigating careers beyond academia can feel overwhelming, especially when you're managing the demands of a busy PhD or postdoc. This session is designed to help you get clearer on what you actually want from your next steps, focusing on the parts of yourself you can take with you from academia and apply elsewhere, rather than dwelling solely on what you might be leaving behind. This isn't about having a perfectly formed career plan (because, let's face it, who does...?). Instead, it's about making sure you don't waddle blindly into your next role, and that you have your ducks in enough of a row to spot better-fit opportunities, make more intentional decisions, and gradually build clarity and confidence.

DR HOLLY PRESCOTT

Holly Prescott is a career guidance practitioner specialising in supporting doctoral and postdoctoral researchers, with 10 years' experience helping researchers to feel more confident about their next steps and to make career transitions into a variety of sectors. She is also the founder of Post-PhD careers blog 'PostGradual' which, since its launch in 2021, has attracted over 75,000 unique readers in over 150 different countries. Holly's book, 'Navigating Careers Beyond Academia: A Practical Handbook for Doctoral and Postdoctoral Researchers,' is due for publication by Routledge in 2026.

Holly holds a PhD from the University of Birmingham, PGDip (QCG) in Career Guidance from Coventry University and the Career Development Institute, and is a Fellow of Advance HE (FHEA).



MENTAL HEALTH AND RESILIENCE – FINDING SUPPORTIVE EMPLOYERS AND MAINTAINING WELLBEING

09:30 – 10:30

Uncover strategies to identify supportive employers, cultivate resilience and strike a balance between professional and personal life.

In this session, we will explore what resilience means and why it is important in your job search, build confidence in your decision to transition, recognise your transferable skills and align them with your values, address and overcome psychological barriers, and develop your own personal resilience toolkit.

USING RESEARCH SKILLS FOR CAREERS IN POLICY

10:45 - 11:45

Thinking about taking your research skills beyond academia and into the world of policy? Find out here to start your search, the key skills and experience required, and what policy-focused roles look like.

DR ELLIE HASSAN

Policy Analyst at UK House of Lords

Following a Psychology BSc and Neuropsychology MSc, Ellie commenced a PhD in Sport and Health Sciences at the University of Exeter. In 2021, Ellie took a break from her PhD to complete a UKRI-funded POST fellowship in the House of Lords Committee Office. This was an excellent experience, and so she subsequently applied for a job, spending six months working there as a Policy Analyst. In early 2022 she returned to her PhD, "The Effects of Fatigue on Manual Dexterity", which she completed in 2024. She has since continued working in the House of Lords as a Policy Analyst and has supported a wide range of Select Committees on a broad range of topics including university spin-outs, planning for housing delivery, and the Terminally Ill Adults (End of Life) Bill. She currently supports the Retirement and Participation Committee.



DR THANUJA GALHENA

Head of Advanced Materials, Department for Business and Trade

Dr. Thanuja Galhena is a UK civil servant, working in the Department for Business and Trade. Her current role focuses on attracting foreign investment into the UK Advanced Materials sector to drive growth and job creation, developing materials supply chains for advanced manufacturing in the UK and building necessary policy frameworks to support that. Before joining the Civil Service, she worked in both academia and industry as a Materials Engineer. She was a Senior Scientist at a UK manufacturing company and before that, a Postdoctoral Research Associate and a Teaching Fellow at the University of Cambridge. She graduated with a BSc in Chemistry from the University of Colombo, Sri Lanka, followed by a M.Phil. in Nanotechnology and Material Science and studied for her PhD at University of Cambridge at the Department of Engineering. Thanuja continues to engage with academia, and is an OPEN Visiting Fellow for 2026, where she will be strengthening the links between academic research and policymaking.



DR PRIYANKA PANCHAL

Suicide Prevention Lead at the UK Ministry of Defence

Dr Priyanka Panchal serves as the Suicide Prevention Lead at the UK Ministry of Defence (MOD), where she holds responsibility for the Armed Forces Suicide Prevention Strategy and Action Plan and provides strategic coordination of suicide prevention policy and activity across Defence. She obtained her undergraduate degree in Psychology from University College London (UCL), followed by a master's degree in clinical Neuroscience at the Institute of Neurology, UCL, with research focused on mood and anxiety symptoms in Parkinson's disease. She subsequently joined the University of Oxford's Department of Psychiatry as a Research Assistant on a major Wellcome Trust-funded investigation into mood instability and later completed her DPhil examining its clinical, behavioural, and neural underpinnings as a risk factor for mood disorders. Dr Panchal undertook postdoctoral training at Yale University's Mood Disorders Research Program and in Child and Adolescent Psychiatry at Oxford, before transitioning from academia to her current policy role at the MOD in Whitehall, London.



CAREERS IN CHARITIES AND NOT-FOR-PROFITS

12:00 - 13:00

Charities and not for profit organisations offer intellectually challenging, values driven careers that draw on many of the skills developed through doctoral and research work. This panel brings together professionals working across the charity and not for profit sector who have previously worked in academic research. Panelists will discuss how they moved from academia into the sector, the types of roles available, and what the transition looked like in practice.

DR ANETT KISS

Monitoring Officer at The Wildlife Trusts

Anett completed a DPhil in Ecology at the University of Oxford, funded by the NERC Environmental Research Doctoral Training Partnership. Her doctoral research examined life history optimisation in response to environmental change, exploring how organisms adapt to shifting climatic conditions. Her work contributes to a deeper understanding of ecological resilience in the face of accelerating environmental change.

Alongside her research, Anett gained extensive field experience as a fieldwork assistant at both the University of Edinburgh and the University of Oxford, contributing to long-term ecological monitoring projects.

She is currently Monitoring Officer for The Wildlife Trusts' UK Temperate Rainforest Programme, where she is developing a monitoring and evaluation framework to support large-scale nature restoration, including work at The Rothbury Estate. In this role, she bridges academic ecological research and applied conservation practice, translating research expertise into tangible impact within the environmental charity sector.

DR EMILY KNIGHT

Curator, Petworth House

Emily undertook her undergraduate MA in History of Art at the University of Edinburgh. She then went onto complete her MSt (2012) and DPhil (2019) in History of Art at the University of Oxford. Her doctoral thesis looked at posthumous portraiture in Britain from the mid-18th to early 19th centuries. During her DPhil, her research was supported by various bodies including the Yale Center for British Art, the Paul Mellon Centre for Studies in British Art, and the Huntington Library. In between her MSt and DPhil, she worked as the Studio Manager of a Paintings Conservation Studio and then spent a year living in Rome improving her language skills while working for a travel company that organised art historical tours led by local academics. During the last two years of her DPhil, she worked firstly as a Postdoctoral Researcher/Curatorial Fellow at Kensington Palace (Historic Royal Palaces) with a particular focus on the academic programming that supported the exhibition 'Enlightened Princesses: Caroline, Augusta, Charlotte and the Shaping of the Modern World' (2017). She then worked for 5 years as the Assistant Curator of Paintings and Drawings at the V&A before becoming the Curator at Petworth House, National Trust where she has worked for the last 3 years. She has curated a number of exhibitions and displays mostly focusing on 18th and 19th-century British art and has published on topics including artist sketchbooks, the history of colour, art making manuals, and commemorative portraiture.

CAREER OPTIONS FOR STAYING AT OXFORD UNIVERSITY BEYOND RESEARCH

13:30 – 14:30

Hear from Oxford University staff who began their careers in academic research and have since moved into a wide range of careers across the University.

DR MONICA PALMERO FERNANDEZ

Research Practice Coordinator, Research Services, University of Oxford

Mónica obtained her PhD in the archaeology of ancient Western Asia from the University of Reading and has held research and teaching posts at the University of Reading and the University of Glasgow. She has focused her professional practice on initiatives that support more inclusive, ethical, and equitable research and teaching cultures in archaeology. In 2023, she joined the University of Oxford's Research Practice team to help develop a holistic training programme to support fairness, transparency and accountability in the conduct of research.

DR KRISTINA PIKOVSKAIA

Research Manager, Department of Economics, University of Oxford

Kristina Pikovskaia (DPhil, International Development, University of Oxford) is a research manager in the Department of Economics at the University of Oxford, where she supports researchers across the full grant lifecycle, strengthens research support processes, and helps translate ideas into competitive funding bids and well-managed awards. After completing her DPhil, she worked in academic support and research management in Oxford's Department of Economics, then held a Leverhulme Early Career Research Fellowship at the University of Edinburgh before ultimately choosing to build her long-term career in research management. Prior to her current role, she was a grants manager in Oxford's Department of Engineering Science, overseeing post-award management and supporting delivery across complex research portfolios. She brings a practitioner's perspective on translating academic skills into impactful professional services roles within universities.

DR KATIE ROBERTS

Strategic Projects and Events Manager, Kennedy Institute of Rheumatology, University of Oxford

I studied Biological Sciences at the University of Oxford (2009–2012) before completing my PhD in Cellular Biology at the University of Manchester. Towards the end of my PhD, I realised that I enjoyed writing about science more than doing science, so that's where I went! I moved back to Oxford and joined an agency as a Medical Writer working for a large Pharmaceutical client. I enjoyed the travel and the challenge of turning trial data into a compelling story, but realised Medical Writing wasn't for me. I took a sidewise jump into a product coordination role in Bio-Rad, then moved into their marketing team. I wrote about flow cytometry, antibodies, and got stuck into lots of innovative projects! Then I spent a year as a Content Manager for Oxgene, working in the Cell and Gene Therapy space. Writing about gene therapy manufacture, a topic totally new to me, was an exciting challenge. I joined the Kennedy Institute of Rheumatology, University of Oxford, as their Scientific Writer in 2023. In 2024, I was regraded to Strategic Projects and Events Manager. My work falls into three areas: strategic scientific writing, communications, and event leadership..

DR AFRA PUJOL I CAMPENY

Educational Policy Officer, Oxford University

Afra completed a PhD in Old Catalan Word Order at the University of Cambridge, examining syntactic variation in a thirteenth century Catalan chronicle. During their time at Cambridge, they held multiple teaching roles in the Faculty of Modern and Medieval Languages, including Catalan Lecturer and Affiliated Lecturer, alongside college teaching as a Batista i Roca Fellow. Their work combined research in Romance linguistics with small group teaching in Hispanic and Romance linguistics.

Following postdoctoral positions in France and a British Academy Postdoctoral Fellowship at the University of Oxford. Backed by their substantial teaching portfolio in HE, Afra began exploring potential career routes roles in educational policy. They are now Senior Policy Officer at the University of Oxford, where they draw on their research background to support institutional policy development, stakeholder engagement and strategic planning within higher education.

DR ZOË LEE

**Research Funding Manager, Research Funding & Contracts Team, Research Services
University of Oxford**

I completed my PhD in Biogeochemistry in Bristol in late 2009 and then did a 2 year post-doc at the University of Leicester. I also spent a year working in industry (for GSK) as an undergraduate, so had a small glimpse into the industrial sector. Having never harboured ambitions to be an academic though, following my post-doc I branched out into looking at professional services roles. The role in Research Services (RS) at Oxford involved the need to read funding applications and have an eye for detail, as well as drawing on other 'soft skills' I had from my time as a researcher. Part of my team's remit in RS is to help researchers when completing their funding applications, and I also developed some advice tailored specifically for early career researchers. At Oxford, I've been part of a team delivering various training sessions aimed at winning research grants. As well as giving tips on grant writing, we also cover a little in terms of advice on both careers skills and resilience.

**PATENTS AND INTELLECTUAL
PROPERTY LAW****15:00 – 16:00**

Hear from a patent attorney and an intellectual property lawyer about their work, and how they use their science background in their jobs.

DR CRAIG LUMB

Senior Associate (IP Solicitor), Carpmaels & Ransford LLP

Craig is a solicitor in the Dispute Resolution team with a focus on patent litigation, primarily in the life sciences sector. He has experience of litigation in the High Court and the Court of Appeal in the UK and of coordinating parallel litigation across multiple jurisdictions in the context of global pharmaceutical life cycle management projects. Craig's experience includes advising on disputes concerning formulation, process, second medical use and dosage regimen patents in the fields of small molecule pharmaceuticals, non-biological complex drugs, and therapeutic antibodies. Craig has also advised clients on Supplementary Protection Certificate (SPC) issues.

Outside of the life sciences sector Craig has worked on telecoms disputes involving SEP litigation and FRAND issues. On the non-contentious side, Craig has previously assisted clients with the IP aspects of M&A transactions and licensing agreements. He also has in-house experience, having spent six months on secondment to the group legal department of an international defence, aerospace and security company where he was involved with a wide range of corporate and commercial matters.

Before joining Carpmaels & Ransford in 2018, Craig trained at a global firm and worked at one of London's leading IP firms post-qualification. Craig has a degree in Natural Sciences, specialising in Chemistry, from the University of Cambridge and a doctorate in Biochemistry from the University of Oxford.

DR RICHARD MORRIS

Associate, European and UK Patent Attorney, J A Kemp LLP

Richard is an associate at J A Kemp LLP – a firm of UK & European patent, trade mark and design attorneys. Specifically, he is a European and UK patent attorney in their Engineering and IT group. His role is to advise businesses of all sizes on how best to protect their intellectual property, usually new innovative technologies they have developed. As a major part of this he helps them to prepare and submit applications for patents in jurisdictions all over the world.

Richard did an MPhys in Physics and a DPhil in Condensed Matter Physics, both at Oxford University. His DPhil research was concerned with the behaviour of spin waves (excitations of magnetically-ordered materials) at temperatures close to absolute zero. During his time at Oxford he was heavily involved with the OU Company of Archers, and was at different times secretary, treasurer and president. He went straight into working as a trainee patent attorney after finishing his DPhil and completed the various professional qualifications while working for J A Kemp LLP and Events Manager. My work falls into three areas: strategic scientific writing, communications, and event leadership..

Events on
TUESDAY
24 MARCH
2026





EDUCATION CAREERS FOR THOSE WHO LOVE TEACHING MORE THAN RESEARCH

9:30 – 10:30

Is it ok to love teaching students more than research? Is it possible to carve out an academic career that focusses primarily on teaching rather than research?

We see many DPhil students and research staff who get more of a buzz from working with students than their research. Perhaps, for you, teaching appeals because you enjoy working with people, or sparking a light-bulb moment for your student, or perhaps you love sharing ideas about your subject and creating a tangible impact. Understanding the appeal of this side of your academic work can unlock a host of potential career paths, both within higher education and beyond it, in the classroom and in other education-related roles.

In this session we'll explore a multitude of career paths relating to a love of education. We'll answer the question: Is it possible to carve out an academic career that focusses primarily on teaching? And we'll look at the potential to transition to a myriad of other teaching roles. Then we'll broaden the discussion into alternative career areas that have education values at their heart and build on the research skills that you already have such as education policy, advisory and development roles and more.

DR ABBY EVANS

Careers Adviser, Oxford University Careers Service

Abby's research used geophysical methods to study the volcanism associated with the initial rifting of the North Atlantic. Following post-doctoral work at Cambridge, Abby taught Science in secondary schools before moving into careers work at Oxford.

Abby leads the team of Careers Advisers. With a particular focus on science and education, she regularly contributes to outreach activities for the University, and widening participation initiatives. She chaired a national advisory group on Teaching and Related Professions, and is a contributing author of publications on science, engineering, education and academic careers.



CAREERS IN MEDICAL AND HEALTHCARE COMMUNICATIONS

10:45 - 11:45

Communication skills are fundamental to a researcher's day-to-day work. This panel session features speakers who have built on these skills to go into healthcare and medical communications, careers that aim to raise awareness of therapies and medical devices that could transform lives.

DR GRACE MEAKER

Associate Medical Editor at RFA Advertising and Marketing Ltd

Grace works on the editing and quality review of a range of pharmaceutical and healthcare materials, including emails, video scripts, websites and detail aids, helping to make sure the content is clear, accurate and consistent.

She studied Biological Sciences (Genetics) at Cardiff University before completing a DPhil in Medical Sciences at the University of Oxford, where she researched blood stem cell regulation. During her DPhil, Grace presented her work at conferences as well as writing and editing scientific manuscripts, lay summaries and public-facing blog content. It was through those communication-focused parts of academia that she developed a strong interest in translating complex science for different audiences, which led her to move into medical communications after her DPhil.



DR MEG STOKER

Medical Writer at Porterhouse Medical

After completing my BSc in Biomedical Sciences from the University of Bath in 2016, I continued my academic journey with a DPhil in Women's and Reproductive Health from the University of Oxford. My DPhil project was focused on targeting mitochondrial metabolism in cancer, where I was testing a novel therapeutic compound in preclinical cancer models. During my DPhil, I discovered the field of MedComms and realised it aligned perfectly with the parts of academia I enjoyed the most (data analysis, communication of findings and attending congress), leading me to seek out writing opportunities throughout my time at university. After graduating from Oxford in 2024, I began my career at a MedComms agency, Porterhouse Medical. Here, I've been able to enjoy working on a range of educational and commercial materials for a variety of audiences, all while using the skills learned through my DPhil.



DR BEATRICE TYRRELL

Scientific Director, Aspire Scientific

As a Scientific Director at Aspire Scientific, I lead a team committed to partnering with our pharmaceutical company clients to deliver high-quality scientific materials that meet audience needs. Our medical writing services range from pivotal clinical trial publications, to bringing content to life for scientific meetings, to training materials for pharma teams, and much more. Before entering medical communications (MedComms), I completed an MA in Natural Sciences at the University of Cambridge, specialising in Pathology, and a DPhil in Infection, Immunology, and Translational Medicine at the University of Oxford. For my DPhil, I investigated the antiviral and immunomodulatory effects of iminosugar compounds, particularly in dengue virus infection. During my degrees, I gained science communication experience outside the lab, including as Features Section Editor for Phenotype and Founder of Oxford Hands-On Science. I was drawn to a career in MedComms and was able to gain practical, paid medical writing experience through Aspire Scientific's Aspirations scheme. I have now been at Aspire for over 7 years, enjoying continuous development of my knowledge and skills.



MOVING BEYOND ACADEMIA: WHERE TO FIND NEW CAREER OPTIONS

12:00 – 13:00

Have you decided that an academic career is not for you? It is easy to get stuck after coming to this realisation and wonder what to do next.

During the session we will look at tools and strategies for identifying attractive roles and understanding what a job really entails, whilst also considering the importance of knowing your own skill set and preferred parameters and using that knowledge to shape your job search.

Workshop objectives:

- Identify appropriate tools to clarify your personal work preferences and skills
- Discover resources and strategies for investigating career options in a structured way
- Observe tools for gathering evidence of careers paths for transitions from academia



FROM ACADEMIA TO QUANTITATIVE FINANCE

13:30 - 14:30

Researchers with strong analytical and quantitative skills are in demand across the finance sector. Roles in quantitative research, software development, and strategic analysis often draw directly on the methods, coding, problem-solving, and rigour developed through academic research.

In this panel, professionals from quantitative finance will share insights into the day-to-day realities of their work and what they look for in candidates with research backgrounds. You'll explore how academic skills translate into finance, how to position your experience for these roles, and what to expect from recruitment processes, including technical interviews and assessments.

SEB EAST

Quantitative researcher, GSA Capital

Sebastian is a quantitative researcher at GSA Capital, where he develops systematic trading strategies for global equity markets. Prior to joining GSA, he was a Lecturer in the Department of Aerospace Engineering at the University of Bristol, where he worked on research problems at the intersection of optimization, control theory, and machine learning, and taught undergraduate control theory. Before that, he completed his doctorate in optimization and control in the Department of Engineering Science at the University of Oxford.

EMILE JACQUARD

Quantitative researcher, Susquehanna

CAREERS IN CONSULTING FOR RESEARCHERS

15:00 - 16:00

The ability to utilise research skills - critical thinking, project management, communication - mean that consulting careers are rewarding and engaging for many researchers moving beyond academia. In addition, consultants are sought from a broad range of disciplines and backgrounds. Whether it's social enterprises or finance, technology or research, having impact in an area that interests you is possible through a career in consulting.

DR EMMA CARRICK SMITH

Senior Consultant, d-fine

Her role is to provide analytical and quantitative support as well as software development skills on projects spanning risk in banks to IT architecture and implementation design for financial regulators. She has recently adopted the role of Head of Crypto & Blockchain in the London Office.

Emma completed a BSc in Mathematics at the University of Manchester. Following on from this, she completed an MSc in Mathematical Modelling at UCL where she enjoyed learning about areas in mathematical ecology and evolutionary game theory and carried out research in modelling blood clot formation. Following on from this, she carried out a DPhil in Applied Mathematics at the University of Oxford in collaboration with AstraZeneca where she specialized in mathematical oncology. In particular, modelling the growth and response of lung cancers to cancer therapies.

During her time at Oxford, Emma was a member of the middle common room student committee in charge of the student bar. She also attended many conferences related to my research and taught mathematics to undergraduate students at St Hugh's and Wadham College.

DR RAZIA CHOWDHRY

Senior Associate, PwC

With extensive experience in biotechnology and currently a Senior Associate at PwC UK, Razia's journey includes impactful teamwork as a Senior Technical Consultant & Team Lead at GrantTree. Skilled in biochemistry and molecular biology, she spearheads R&D initiatives, fostering innovation with a mission to advance interdisciplinary bioscience.

Razia completed an Interdisciplinary Bioscience Doctoral Training Programme at Oxford, with her DPhil thesis titled "Engineering Cell Free Protein Synthesis and Synthetic Cells".

DR ALETHEA LEE

Consultant, BCG

Alethea joined BCG London in September 2023. She has worked across biopharma, automotive, private equity (PIPE), and TMT sectors. She is currently on a temporary mobility assignment with BCG's Shanghai office. Prior to BCG, Alethea completed a DPhil in Organic Chemistry at the University of Oxford and her undergraduate degree from the University of Toronto. Outside of work, she is an avid squash player and enjoys exploring new restaurants and culinary experiences.

INTRODUCTION TO INDUSTRIAL RESEARCH & DEVELOPMENT

16:15 - 17:15

Innovation is putting together what is needed with what is possible. In general, scientists and engineers will be able to define what is possible based on available or foreseeable technology. What is needed by the business or market, by customers or consumers can be defined by anyone with any degree subject with an interest in the human condition and societal trends. He will outline an industrial view of disruptive and sustaining innovation strategy, innovation funnels, project management, programme and portfolio management, intellectual property considerations and organisational structures. Out in the real world, organisations will have their own structures, systems, nomenclatures, metrics and job titles but this general introduction will help you to navigate this complexity in the organisations and career paths that you are considering. There will be much more research for you to do, but this introduction is a great start to your personal career journey whether you end up in industry or academia.

DR MIKE MOSS

Careers Adviser, Oxford University Careers Service

As a careers adviser at Oxford Careers Service, my role is to provide more than 700 careers appointments for students, researchers and alumni and more than 40 specialist training workshops each year. I did a BSc and PhD in Chemistry at the University of Birmingham, and then a 2 year postdoc in the California Institute of Technology. At 27 I joined Procter & Gamble Research & Development on their graduate scheme. During my 22 years at Procter & Gamble, I lived in the UK, Rome and Brussels, conducted in-depth consumer and market research in thirteen countries including Japan, Malaysia, United States, Morocco, Algeria, Turkey, Russia and most European countries, I published 54 patents, managed a significant acquisition and was site leader of an R&D Technical Centre.



Events on

WEDNESDAY 25 MARCH 2026





CAREERS IN TECH: AI/ML, SOFTWARE AND CONSULTING

9:30 - 10:30

The experiences of researchers transitioning into both technical and non-technical roles.

DR ADRIÁN BAZAGA

Senior Researcher, Microsoft

Adrián Bazaga is a Senior Research Scientist at Microsoft, where he leads end-to-end development of frontier language models, from large-scale pretraining to post-training, evaluation, and deployment. His work focuses on building efficient, high-performing AI systems for real-world applications, and he has spearheaded the development of systems already in use by millions of people globally.

He completed his PhD in Machine Learning at the University of Cambridge and has published in leading venues such as ICLR, ICML, ACL, and EMNLP. Previously, he gained research experience at Microsoft Research and Amazon AGI, and earlier in his career spent several years working across startups at the intersection of AI and biology.

Adrián's interests lie in LLM post-training, including reinforcement learning, reasoning, multimodality, tool usage, and agent-system interaction. He is passionate about making AI more capable, efficient, and accessible, and about translating research advances into real-world impact as well as helping others navigate and contribute to this fast-moving field.



DR FERNANDA GONÇALVES

AI Research Engineer, Oxford Dynamics

Fernanda Gonçalves is an AI Research Engineer based in Oxford, working at Oxford Dynamics, where she combines a strong academic background with hands-on industry experience in artificial intelligence and machine learning systems for defence applications. Her work focuses on building intelligent systems that extract, structure, and analyse complex data, including large language model (LLM) pipelines, multi-agent architectures, LLM orchestration frameworks, and real-time intelligence fusion.

Alongside her industry role, Fernanda completed her PhD in Physics at the University of Oxford, conducting research within the LHCb experiment at CERN. She combines deep technical expertise with academic rigour, mentoring a growing engineering team while advancing cutting-edge agentic AI systems. Bridging fundamental physics and applied AI, Fernanda brings a uniquely analytical perspective to complex challenges in modern defence technology and intelligent systems.



DR BRAGE GORDING

Senior IT Consultant, TNG Technology

Dr. Brage Gording is a Senior Consultant at TNG Technology Consulting, specializing in resolving complex IT challenges in software development and cloud infrastructure. From 2021 to 2024, he drove performance optimizations, managed database migrations, modernized legacy software, developed monitoring solutions, and spearheaded an AI-powered product search for a major online fashion retailer.

Since 2025 he has served as project lead for an NHS healthcare project, guiding his team of consultants in the digitalization and centralization of vaccination services. Concurrently, as the client's Lead DevOps Engineer, he creates secure AWS serverless environments, implements monitoring and alerting systems, resolves performance bottlenecks, and optimizes development and release processes.

Dr. Gording holds a doctorate in Physics from Ludwig-Maximilians-Universität München and the Max Planck Institute, where his research focused on recovering particle representations in endomorphism algebras. His expertise encompasses team and client management, AWS, Terraform, SAP Commerce, DevOps, CI/CD, and various programming and scripting languages.



FROM PHD TO PUBLISHING

10:45 - 11:45

In this session, with the help of our panel of publishing professionals, we will explore the options for researchers in publishing – the roles, the skills, the areas of publishing where a doctorate is essential and the areas where it is a ‘nice to have’; how a doctorate degree is viewed and how best you can promote the skills you have developed on your DPhil.

DR MANUEL BREUER

Chief editor at Nature Communications for Springer Nature

Following studies in Germany and the US, Manuel received his PhD in cell and developmental biology from the Université Pierre et Marie Curie, Paris. After post-doctoral work in Edinburgh, he moved to academic publishing as an editor for Journal of Cell Science and The FEBS Journal. In 2021, he joined Springer Nature, first at Communications Biology and now as chief editor for cell & developmental biology at Nature Communications. Over the past decade, Manuel gained extensive experience working with editorial teams across the globe and overseeing editorial boards.



DR CAROLINE KUHTZ

Production editor at Berghahn Books

Caroline Kultz (they/them) has studied English, Literature and Cultural Studies at the Universities of Bielefeld and Hildesheim, Germany, and graduated with a PhD thesis on queer identities in 2013. Since 2016 they are employed as a production editor at Berghahn Books in Oxford and launched their own indie imprint, Wollschweber Publishing, in 2024.



DR JEFFREY POON

Publisher, Elsevier

Jeffrey works as a Publisher at Elsevier since 2025. His publishing work involves the strategy, development, and business aspects of a portfolio of analytical, physical, and theoretical chemistry journals. His experience as a former Senior Editor (2021–2025), leading a team of scientific editors, involved handling transfers of rejected manuscripts, advising authors on the necessary amendments to maximise their publishing potential, and handling peer review. He read MChem in Chemistry at the University of Oxford and then a PhD in Chemistry at the University of Cambridge. After a Croucher Postdoctoral Fellowship at the Fritz Haber Institute in Berlin, he transitioned to a career in publishing.

CAREERS IN THE CREATIVE INDUSTRIES

12:00 - 13:00

In this session you will have the opportunity to hear about the Creative Industries, learning more about how to develop skills, gain relevant experience and find work.

DR ALEXA FROST

Archivist, Blenheim Palace Heritage Foundation

As Archivist at Blenheim Palace, I am responsible for developing and implementing procedures to manage Blenheim's heritage and records, ensuring that their historically valuable documents and modern records are preserved and organised to the highest professional standards. I provide archival material for Blenheim's restoration projects, exhibitions, education workshops and marketing opportunities. I completed Classics degrees at St Anne's, Oxford (BA), University of Bristol (MA) and Royal Holloway, University of London (PhD). I also hold an MA in Psychoanalytic Studies and a degree in Archives and Records Management (University of Dundee). I have previously worked in Public Relations and Customer Service.



DR ANDREA WILLIAMS

Script Coordinator, Netflix

As an undergraduate, Andrea read French Language and Literature at the University of Adelaide, specialising in French theatre. Having won a Commonwealth Scholarship to Oxford, she read for a DPhil in Medieval and Modern Languages, with a thesis on the Arthurian legend in Old French. Andrea was an academic for 20 years before moving into film & TV about 5 years ago.

She is now an experienced Script Consultant (Features, TV, Short Films; particularly Drama), currently working as a Script Coordinator for Netflix on shows such as Bridgerton and The Diplomat. Andrea is a published author, including a book on the Legend of the Holy Grail, and is in the process of writing and developing a TV drama project of her own.

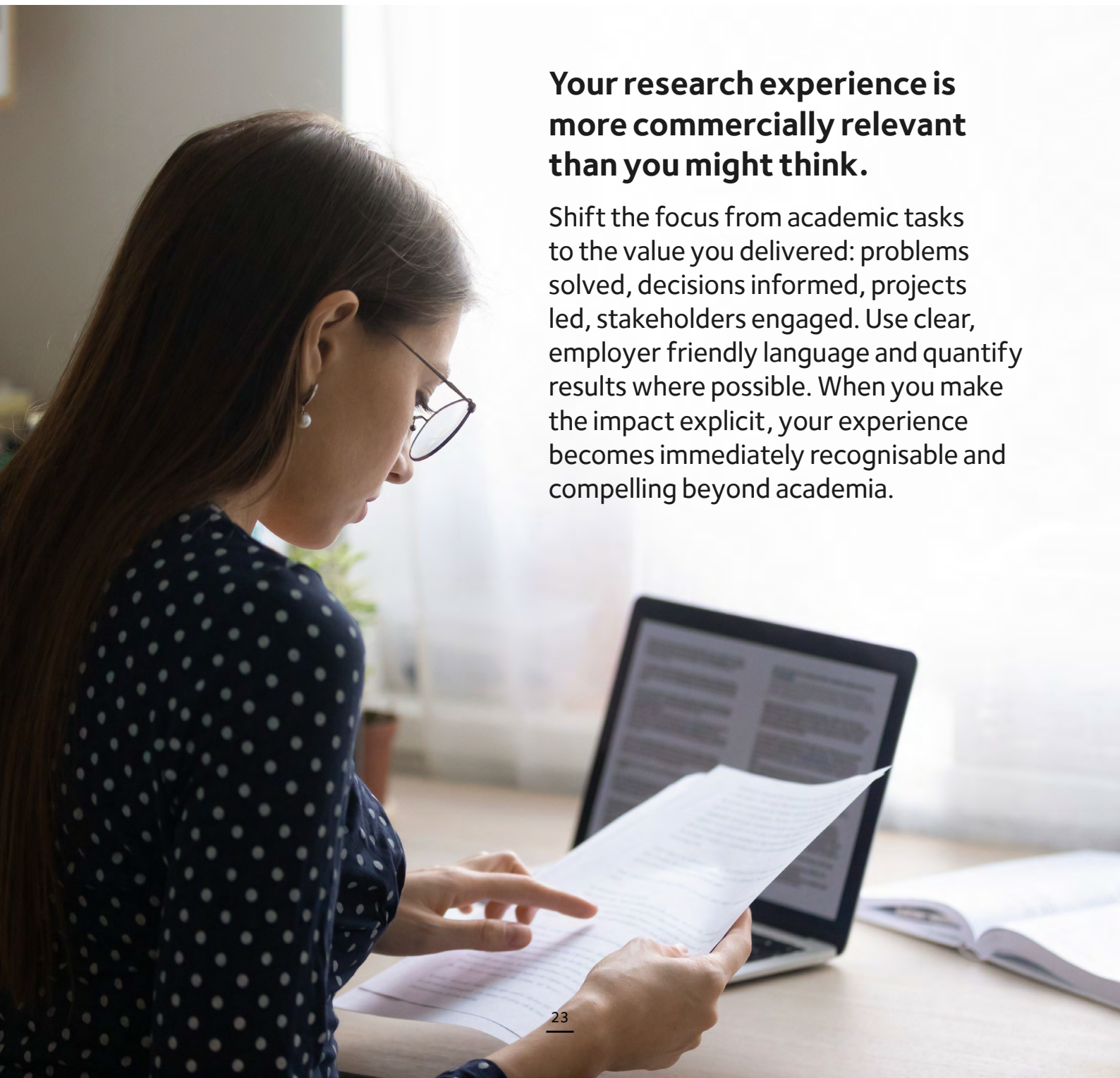


TRANSLATING RESEARCH EXPERIENCE FOR NON-ACADEMIC EMPLOYERS

13:30 - 14:30

Are your research skills and experience valuable beyond academia?

The answer is 'yes'! It's just a matter of packaging them in a format that employers beyond academia will understand. In this session, we will provide tools for identifying your professional skills and converting your research experience into strong applications.



Your research experience is more commercially relevant than you might think.

Shift the focus from academic tasks to the value you delivered: problems solved, decisions informed, projects led, stakeholders engaged. Use clear, employer friendly language and quantify results where possible. When you make the impact explicit, your experience becomes immediately recognisable and compelling beyond academia.

SCIENTIFIC RESEARCH & DEVELOPMENT IN INDUSTRY: PANEL DISCUSSION

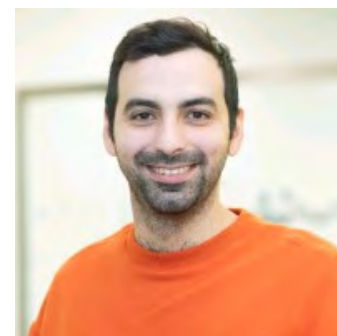
15:00 - 16:00

A research career isn't limited to academia. Meet PhD graduates from across the STEM subjects and working in diverse industry sectors, and join the discussion on how they have applied their research expertise in roles beyond the university setting.

DR MICHELE FRESNEDA ALARCON

Immunology Scientist, Moderna

Dr. Michele Fresneda Alarcon is a Principal Research Associate at Moderna, where he leads as a technical expert in high-parameter flow cytometry and clinical biomarker development. After earning his PhD from the University of Liverpool, where he investigated the metabolic regulation of human neutrophils in rheumatoid arthritis, Michele successfully bridged the gap between academic research and the biotechnology industry. His career journey includes roles at Cancer Research UK and as a postdoc at the University Hospital Bonn, providing him with a wealth of experience in navigating the transition from a doctoral program into high-impact R&D. Beyond the wet lab, Michele is a "hybrid" scientist proficient in R and Python for predictive modelling and -Omics analysis. With a background in secondary science education and a PGDE, he is particularly passionate about mentoring early-career researchers on translating their specialised academic skills into scalable clinical study data generation and innovative industry solutions.



DR DILLON MCGURTY

Materials and Formulation Scientist, Unilever

I'm a materials and formulation scientist within the Biotechnology and Bisourcing group that sits in Unilever's Home Care S&T category. Before joining Unilever I obtained an MChem from the University of Liverpool and a DPhil from the University of Oxford. Whilst at Oxford, my research focused on the synthesis and functionalisation of borocarbonitride nanotube materials. The DPhil journey deepened my understanding of physical chemistry, material interactions, and enhanced my capabilities around advanced analytical techniques - this knowledge is now applied to real-world formulation challenges face at Unilever.

In my professional role, I focus on developing high-performance and environmentally responsible cleaning solutions. On the day-to-day, work involves surfactant characterisation, formulation design, and the evaluation of innovative materials across a variety of consumer relevant metrics that supports the next generation of products.



DR EMANUIL MLADENOV

Senior Modelling and Simulation Engineer, Williams Grand Prix Technologies

Engineering professional with extensive experience in modelling and simulation across industry and a PhD in driver modelling. Proficient in CAE tools for multiple engineering domains, battery modelling, vehicle dynamics, optimal control, system identification and various machine learning techniques.



CAREERS IN RESEARCH FUNDING

16:15 - 17:15

Panelists will share how they moved into research funding roles, what their work involves, and how they apply their research background in a funding context.

DR SARAH BALL

**Head of Strategic Research Development,
RDM, University of Oxford**

Having completed my PhD at the University of Edinburgh, I pursued an academic career doing my postdoctoral research at the University of Queensland and then moving to the University of Texas as an Assistant Professor to start my own research group. After a period of reflection, I decided to make the transition from academic research to a career in research funding and strategy. I have had the opportunity to work in a range of roles first in BBSRC and later UKRI. Nearly three years ago, I left UKRI and joined the University of Oxford as Head of Strategic Research Development in the Radcliffe Department of Medicine (RDM). In my current role, I lead RDM's Research Strategy and Funding Team and together we support researchers in RDM to apply for internal and external funding opportunities. I also work closely with the Head of Department to deliver a range of strategic activities to achieve RDM's research strategy.

DR ALEXANDRA BUFFRY

Senior Funding Manager, LifeArc

Alexandra began their research career in biology, completing a PhD at Oxford Brookes University following doctoral training at Princeton and Oxford Universities. They went on to hold postdoctoral research roles at Oxford Brookes University and Durham University, alongside lecturing in genomics and biological sciences. Their research experience spans fundamental biology through to translational science within collaborative, grant funded environments. Alexandra left academia to take up a Project Manager position at the Nucleic Acid Therapy Accelerator, leading a portfolio of over 30 preclinical oligonucleotide therapy projects, working with academic institutions, government bodies and biotech partners to translate research into drug development pathways. They now serve as Senior Funding Manager at LifeArc, where they support the development and delivery of research funding initiatives aimed at accelerating therapeutic innovation.

DR NIKOLAY OGRYZKO

**Research and Innovation Careers Policy,
UKRI**

After completing a PhD in Biomedicine at the University of Sheffield, Nilolay spent seven years in postdoctoral research roles across Sheffield and the University of Edinburgh, working at the intersection of immunology, oncology and cardiovascular science. During this period, they led and contributed to multi project research programmes investigating inflammatory signalling and early immune responses to disease, using advanced in vivo imaging and zebrafish models. They developed more than 20 transgenic models, established new experimental protocols adopted across research groups, and supervised and mentored early career researchers. Nikolays first moved beyond academia was to the BBSRC as an innovation and skills manager before joining the UKRI as a Talent Manager where Nikolay is now a Senior Talent Programme Manager.

DR JANINA PESKINSKI

**Training and Development Manager for The
British Academy Early Career Researcher
Network, The British Academy**

Janina Pescinski is an interdisciplinary researcher and educator now working as the Training and Development Manager for the British Academy's Early Career Researcher Network. She leads on the Elevate Programme, which provides leadership training and funding opportunities for ECRs in the SHAPE disciplines. Prior to joining the British Academy, Janina conducted research on migration, borders, citizenship and solidarity activism, including ethnographic fieldwork in France and Italy. She was a postdoctoral researcher at Durham University on the ESRC funded project "Contesting Migration: Pro- and Anti- Migrant Mobilisations in Mediterranean Reception Sites". Janina completed her PhD as a Leverhulme Trust Doctoral Scholar at Queen Mary University of London in the School of Politics and School of Law. Janina has also worked with several international organisations on human rights issues, including Amnesty International and the United Nations University Centre for Policy Research.

RESEARCH CAREERS

Explore Your Options Beyond Academia



Researchers find all sorts of rewarding careers – smart people work everywhere! Such diversity in potential roles can prove challenging when exploring your options.

Research Careers offers a collection of career profiles that enable you to see what others in your position chose to do, why and how they made the move, and what they most enjoy about their job. You will get a feel for their daily activities, workplace culture and work-life balance.

Explore inspiring profiles from 150+ career transitioners at
research-careers.org

RESEARCHERS

Grow your professional insights, contacts, and online presence!

- Openings are available on our team of Oxford postdocs, RAs and DPhil students.
- The team profiles PhD-holders who moved into a range of jobs beyond academic research and their employers.
- As an editor, you will investigate roles or sectors of interest to YOU.
- Expand your communication skills, commercial awareness and job readiness.

Write to contact@research-careers.org, and check us out on [LinkedIn](#) and on [X](#) @OxPostPhD

EMPLOYERS

Inspire researchers and raise your profile!

- Submitting an employee profile to research-careers.org is easy and quick.
- You can accompany this with a brief outline of your organisation.
- This will help PhD students and research staff who are looking beyond academia to expand their options.

Talk to one of the team today, or write to contact@research-careers.org



Events on

THURSDAY

26 MARCH 2026

INTRODUCTION TO INTERNATIONAL DEVELOPMENT AND DIPLOMACY

9:30 - 10:30

In this two-part careers-adviser led session, we will first provide an overview of careers in International Development, discussing how the sector is structured, different types of roles and how to find jobs and work experience opportunities.

In the second part, we will provide an overview of the varied and rewarding careers in diplomacy, and share methods you can use for identifying the relevant routes into diplomatic roles and how to find out more about your chosen career path.

CREATING CVS AND COVER LETTERS FOR CAREERS BEYOND ACADEMIA

10:45 - 11:45

Are you wanting to apply for job roles beyond academic research? Creating a strong CV and Cover letter is vital to unlocking the next stage of the job application process. However, there can be many differences in the format and content of application materials focused towards a role beyond academia compared to one for university research positions.

This presentation will share the building blocks of creating effective CVs and Cover Letters, including how to best translate our research and wider experience into language employers want to see.

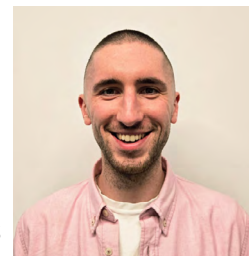
RECRUITER PANEL: ADVICE FROM THE PEOPLE REVIEWING YOUR APPLICATIONS

12:15 - 13:15

Chaired by **Dr Oliver Sampson, Head of Employer Engagement at the Oxford University Careers Service.**

DAVID HAWES

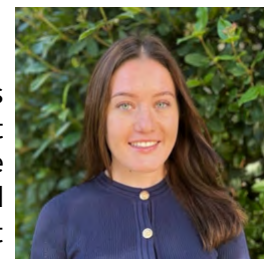
Quantitative Recruiter, Susquehanna



As a Quantitative Recruiter at Susquehanna, my role is to hire Quantitative Researchers and Quantitative Systematic Traders for our summer internship and graduate programmes. I did a BA in Theoretical Physics at Trinity College Dublin, before joining Susquehanna's European HQ in Dublin in 2022. A large focus of my role is to conduct interviews (both technical and non-technical) for PhD, Postdoc and Masters candidates, as well as meeting candidates on campus to advise on the transition from academia to industry. Additionally, I work with our Quant Research and Trading teams in designing mathematical puzzles for both our interview processes and campus events

ANNIE MARCH

Talent Acquisition, G-Research



G-Research is a leading quantitative research and technology firm combining world-class people with advanced machine learning, AI and analytics to build smart strategies that succeed over time. Based in London, the firm applies scientific rigour and cutting-edge technology to tackle complex problems in quantitative finance, bringing clarity to financial complexity and driving long-term performance. Annie has been with the firm for just under a year and is a member of the Talent Acquisition team. She specialises in identifying and engaging exceptional research talent, including PhD students, postdoctoral researchers, professors, and experienced ML scientists. She also heads up recruitment for the Summer Research Programme — a 10-week internship aimed at PhD students in their penultimate year of study, who will hopefully come back and join us fulltime the following year. Annie is committed to identifying researchers who will not only excel at the firm, but will also enjoy their time here.

JAMES SIBBIT

Manager, d-Fine



James is a manager in the d-fine London office who oversees the expansion of AI topics in the UK market. He began his career at d-fine 5 years ago, with an initial focus on Cloud engineering topics. He has developed several large-scale risk & trading platforms in the financial sector, placing an emphasis on designing and developing robust microservice-based cloud architectures that were highly scalable and resilient. He then progressed into the AI space via several technical implementation projects, including the assessment of mycorrhizal colonisation in plant roots using Convolutional Neural Networks (CNNs) and the extraction of SFDR PAI ESG metrics from company reports using LLMs. More recently, he has had a focus on AI strategy projects, particularly focusing on AI enablement on an organisation-wide scale via architecting robust infrastructure and central governance mechanisms to support innovation at scale.

JULIA SADLER

Careers Adviser at Oxford and former Editorial Manager in Publishing



Julia Sadler worked in publishing for 20 years before becoming a careers adviser in 2018. For much of that time she was an editorial manager, which involved recruiting editors and interns into an editorial team. This involved setting job descriptions, sifting applications and creating recruitment tests and interview questions. She loves using that experience when advising individuals who want to go into publishing, creative careers and law among other areas. Fun fact: one of the best editors she ever worked with was a nuclear physics PhD.

CAREERS FAIR FOR RESEARCHERS

14:00 - 17:00

The fair aims to connect Oxford University research students and staff with recruiters from a variety of organisations. They will share details about jobs and programmes open for applications, and discuss the careers paths you could follow in their sector.

Most people attending have experience that bridges different disciplines and crosses a wide range of roles. Try and talk to as many people as you can. We know it can be difficult to approach people for their experience so have set out some questions or ideas that you could think about asking. Everyone is here to help (they remember being at your stage and want to help), and keen to give you an insight into their industry, so do take advantage of it.

ASK EXHIBITORS ABOUT:

- **THEIR CURRENT ROLE.** What does a typical day look like? What do they enjoy about it and what do they find challenging? What skills are crucial for working in their sector?
- **THEIR ORGANISATION.** What is the culture like? Why did they choose it? What training opportunities are there? In their experience is it typical of the sector?
- **THE LIFESTYLE.** What are the hours like? The people?
- **THEIR CAREER PATHS TO DATE.** Where did they start? What training did they have to do? What has helped them along the way?

ORGANISATIONS AT THE CAREERS FAIR FOR RESEARCHERS

Medical
Communications

Aspire Scientific



Website: www.aspire-scientific.com/aspirations

Contact: aspirations@aspire-scientific.com

Aspirations, from Aspire Scientific: Real-life experience in medical writing

Do you have your eye on a career in medical writing? Our Aspirations scheme will be reopening soon: you'll be able to apply to Aspirations and get paid to see if Aspire Scientific is a good fit for you.

Aspirations is the only scheme of its kind in medical communications (MedComms), providing an opportunity to learn from our experienced team and to work on real-life projects. Find out more, including how to apply, at: aspire-scientific.com/aspirations

Aspire Scientific is a people-focused, independent medical writing and communications agency. We strive to be the most considerate MedComms agency to work for. We foster an open, trusting, and flexible culture that actively encourages a genuine and healthy work-life balance. Aspire Scientific is Disability Confident Committed.

How does Aspirations work? Aspirations offers paid, self-employed (freelance), real-life medical writing experience. Work is conducted remotely and is flexible alongside existing commitments. Many Aspirations alumni have gone on to join Aspire Scientific, each starting as a Medical Writer. Several alumni have been key members of the team for years and have all progressed to senior roles.

What are we looking for in applicants? For our Aspirations scheme, we are looking for suitably qualified life scientists (e.g. post-graduate, late-stage PhD, post-doctoral) who are looking to ultimately enter MedComms as a medical writer within the next 3–12 months. Aspirations applicants must be UK based, although exact location within the UK is not important.

Energy
Consultancy

Aurora Energy Research



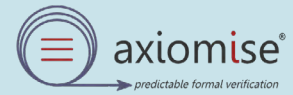
Website: <https://auroraer.com>

From its academic roots, Aurora Energy Research is a thriving, rapidly growing company, currently serving over 700 of the world's most influential energy sector participants, including utilities, investors, and governments.

While we constantly strive to reach new markets and diversify our product portfolio, we are already active across the globe in Asia-Pacific, Latin America, Europe, and North America, working with leading organisations to provide comprehensive market intelligence, bespoke analytic and advisory services, and cutting-edge software.

We are a diverse team of experts with vast energy, financial, and consulting backgrounds, covering power, hydrogen, carbon, and fossil commodities. With this, we provide data-driven intelligence to fuel strategic decisions in the global energy transformation.

ORGANISATIONS AT THE CAREERS FAIR FOR RESEARCHERS

Engineering &
Manufacturing**Axiomise**

Website: www.axiomise.com/careers/

Axiomise is a leading provider of formal verification training, consulting, and services, working to transform how digital chip designs are verified. We are at the forefront of applying **formal verification**—a powerful, mathematically rigorous method for proving the correctness of hardware designs—to help engineers build safe, secure, and reliable systems. **Formal verification** involves using logic and mathematical proof techniques to verify that a hardware design meets its specification in all possible scenarios, not just the ones covered by traditional simulation. This eliminates entire classes of bugs and can drastically reduce the time and cost of bringing complex silicon chips to market.

We're looking for enthusiastic candidates with backgrounds in computer science, mathematics, physics, or electronic engineering who are excited about **logic, problem-solving, and hardware design**. If you want to tackle the most complex verification challenges and help shape the future of the semiconductor industry, we'd love to talk to you.

Science
consulting**Costello Medical Consulting**

Website: apply.workable.com/costello-medical/

Costello Medical is a life sciences consultancy dedicated to advancing patient care through scientific rigor, independent analysis, and transparent communication. We partner with biotech, pharmaceutical, and healthcare organisations to design and deliver evidence-based insights that inform decision-making across clinical development, market access, and policy. Our multidisciplinary team combines medical science, health economics, market access, and communications to translate complex data into clear, impactful narratives for diverse stakeholders, including patients, clinicians, regulators, and payers.

Founded on integrity and collaboration, we champion rigorous methodology, objective evaluation, and timely delivery. We offer a dynamic environment that fosters continuous learning, professional growth, and interdisciplinary problem-solving. Our work spans literature reviews, meta-analyses, economic models, trial design support, strategic advisory, and tailored medical communications. We pride ourselves on a supportive culture that values curiosity, mentorship, and a balanced approach to work and life.

If you are motivated by scientific excellence, rigorous analysis, and making a difference in patient outcomes, Costello Medical provides a rewarding path to apply your scientific training in a consultancy setting. Join us to help shape evidence-based healthcare solutions and improve access to effective therapies worldwide.

Consulting

d-fine

Website: www.d-fine.com

.. imagine the power of more than 1,500 physicists, mathematicians and computer scientists working as part of a European company with over 20 years of service excellence focused on data science, technology and mathematical modelling. That's d-fine.

d-fine is a European consulting company with a growing international presence with eleven offices distributed across seven countries. Our projects focus on quantitative challenges in data analytics, data science, modelling, and the development of sustainable technological solutions.

d-fine

—
analytical.
quantitative.
tech.

— Your career at d-fine

We are a European consultancy firm focussed on analytical and quantitative topics and the development of sustainable solutions to bring about positive change for our clients.

What does d-fine offer you?

- Diversity: Work with clients on topics ranging from financial engineering and machine learning through to climate risk and healthcare
- International: Collaborate in project teams staffed across Europe
- Education: Acquire new skillsets to broaden your technical and professional repertoire

Who is eligible to join?

Master's or PhD-level graduates in STEM fields

How can I apply?

Please go to our Job Portal on our website www.d-fine.com

ORGANISATIONS AT THE CAREERS FAIR FOR RESEARCHERS

Entrepreneurship

EnSpire Oxford



Website: <https://enspire.ox.ac.uk/>

EnSpire Oxford is the University of Oxford's entrepreneurship hub, dedicated to supporting aspiring entrepreneurs and connecting all of the entrepreneurial opportunities available across the University. Collaborating with key partners including the Oxford Saïd Entrepreneurship Centre, the Careers Service, and Oxford University Innovation, EnSpire provides entrepreneurial training and networking for students, staff, alumni, and the local community. Through EnSpire, you can explore a range of entrepreneurship programmes and events. Whether you want to develop an entrepreneurial mindset, refine an idea, or launch a venture, EnSpire Oxford provides the tools, connections, and support to get started.

Finance,
Tech

G-Research



Website: www.gresearch.com/vacancies/

We tackle the most complex problems in quantitative finance, by bringing scientific clarity to financial complexity. From our London HQ, we unite world-class researchers and engineers in an environment that values deep exploration and methodical execution - because the best ideas take time to evolve. Together we're building a world-class platform to amplify our teams' most powerful ideas.

Join a research team where curiosity meets scale. You'll investigate foundational questions, uncover market insights and push the boundaries of what's possible - all with the support of near-limitless compute and world-class peers. Take the next step in your career.

Tech, AI

Inframatic Engineering Limited



Website: www.inframatic.ai/careers

Inframatic Engineering Limited is an AI startup building the future of engineering compliance. Our Assurative™ AI platform uses knowledge graphs, ontologies, and reasoning engines to automate compliance verification against engineering standards in safety-critical infrastructure — including rail, maritime, and construction. Inframatic sits at the intersection of artificial intelligence, knowledge engineering, and regulated industry. We work with major rail client organisations to ensure that AI-generated engineering outputs meet the rigorous standards demanded by infrastructure regulators.

We're looking for ambitious researchers — particularly those with backgrounds in knowledge representation, natural language processing, ontology engineering, graph-based reasoning, or applied AI — who want to see their work have real-world impact in industries where getting things right genuinely matters. If you've been working on LLMs, retrieval-augmented generation, formal verification, or domain-specific AI and want to apply that expertise to problems with tangible safety implications, we'd love to talk. We offer the opportunity to work on technically challenging problems at the frontier of AI applied to engineering, within a small and growing team where your contributions will shape the direction of the product and the company. We are based at Howbery Park, Wallingford, Oxfordshire, and we have a research lab style working environment which encourages deep thinking and fast execution. Whether you're finishing a DPhil or looking for your next move from a postdoc, come and find out how your research skills could help make infrastructure safer.



Curious minds. Complex problems. Enduring success.

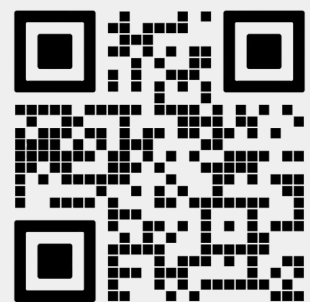
G-Research is a leading quantitative finance research firm.

We bring together world-class researchers and engineers in a culture that values deep exploration, methodical execution and long-term thinking.

We're hiring:

- Quantitative research & ML
- Data science
- Software engineering
- Data analytics

[View our vacancies](#)



gresearch.com

ORGANISATIONS AT THE CAREERS FAIR FOR RESEARCHERS

Banking &
Investment**GSA Capital**

Website: www.gsacapital.com

With offices in London, Zug, Sydney and New York, GSA combines a world-class proprietary platform with innovative thinking to develop and deploy systematic and process-driven investment strategies across all asset classes, geographies, and timescales. We are a collaboration of approximately 170 people. Over 60% of our staff work in research or on developing technology necessary to enable and monetise our research. We are an eclectic mix of mathematicians, scientists, programmers, economists, and a great deal more. At GSA we reward people based on merit and excellence, not necessarily on experience. We avoid the bureaucracy of larger organisations and keep our management structures flat. Decisions are made efficiently; changes are implemented quickly. People who work here enjoy a culture of trust, innovation, and scientific rigour. It is a friendly, open place where people are motivated because they enjoy what they are doing.

Opportunities available: Quantitative Strategists, Software Engineers, Algorithm Developers

Graduates Sought: Students of all academic levels from STEM disciplines

Vacation work: Internships available for penultimate year PhD students as well as Undergraduate and Masters

Sponsorship: We offer sponsorship for suitable prospects

Banking &
Investment**iSAM**

Website: <https://isam-securities.com/careers/>

iSAM is an innovative, financial technology firm specialising in quantitative trading, comprised of iSAM Funds and iSAM Securities. We have 5 global offices with around 200 colleagues and were founded in 2008.

iSAM Funds is an alternative asset manager specialising in systematic investing. Each strategy is unique, provides a specialist quantitative approach and is designed to deliver highly diversifying absolute returns for institutional portfolios.

This includes iSAM Vector – a leader within the Trend Following/CTA space with its roots tracing back to 1981, and iSAM Helix – a quantitative mid-frequency statistical arbitrage strategy trading global equities that aims to produce consistent, uncorrelated returns across a wide range of market environments.

iSAM Securities, regulated by the FCA, SFC, and CTFC, and CIMA registered, is a leading algorithmic trading firm and trusted electronic market maker, providing liquidity, technology and prime services to institutional clients and trading venues globally. The firm offers full-service prime brokerage and execution via its cutting-edge proprietary technology, as well as market leading analytics, cleared through the group's bank Prime Brokers.



Model.

Predict.

Optimise.

Discover
opportunities
and join us



ORGANISATIONS AT THE CAREERS FAIR FOR RESEARCHERS

Banking & Investment

Jane Street



Website: www.janestreet.com/join-jane-street/open-roles/

Jane Street is a global trading firm with offices in London, New York, Hong Kong, Singapore, and Amsterdam. Our approach is rooted in technology and rigorous quantitative analysis, but our success is driven by our people.

We are always recruiting top candidates and we invest heavily in teaching and training. Applications for our 2026 summer internships are open now - they give you a real sense of working at Jane Street full-time. Learn more about us and our roles at our programs and events. No finance experience needed. We look for a passion for critical thinking and creative problem-solving— people like you!

Engineering & Manufacturing

KLA



Website: www.kla.com/careers/locations/united-kingdom

KLA Corporation is one of the world's largest semiconductor equipment companies. We manufacture systems which are used by customers to make semiconductor chips for every type of electronic product. Newport, Wales is home to the R&D and main manufacturing facility of KLA's SPTS division. Recipient of multiple Queen's awards, our diverse, multidisciplinary organisation is proud to celebrate innovative technology solutions and responsible, sustainable business practices. KLA U.K. holds the Investors in People (IIP) Gold standard for outstanding employment practices and is an awarded armed-forces-friendly employer. We opened a new state-of-the-art manufacturing and research and development center in Newport, May 2025

Tech

MATS Research



Website: www.matsprogram.org/careers

MATS aims to find and train talented individuals for what we see as the world's most urgent and talent-constrained problem: reducing risks from unaligned artificial intelligence. We believe that ambitious researchers from a variety of backgrounds have the potential to contribute to the field of AI alignment research. We aim to provide the mentorship, curriculum, financial support, and community necessary to facilitate this contribution.

The fellowship program runs for 12 weeks with in-person cohorts in Berkeley and London, where MATS fellows conduct research with experienced mentors—leading researchers in AI alignment, transparency, and security—while attending talks, workshops, and networking events with other members of the AI research community. Top-performing fellows can extend their research for an additional 6 to 12 months with continued funding, mentorship, and community support. We've trained 440+ alumni over four years, with ~80% now working in AI safety at organisations like Anthropic, Google DeepMind, OpenAI, and the UK AI Security Institute. Fellows have co-authored 150+ papers (7,400+ citations) and around 10% of alumni have co-founded 30+ AI safety startups, including Apollo Research and Timaeus.

During the program, MATS fellows are provided with a generous stipend, research management support, compute budget, accommodation, food, travel, and a comfortable office space in Berkeley or London. MATS full-time staff work closely with fellows and mentors to provide a world-class research program in a collaborative and intellectually stimulating environment. Join us in shaping the future of AI safety and security research!

OXFORD RESEARCH STAFF SOCIETY

Events & activities
run by and for
researchers

Join us for college dinners,
board games, sports, coffee &
chai meetups, pub socials,
discussion groups, book club,
walks, tours, and more!

Our emails bring you social & networking events, professional development opportunities, and other information useful to researchers.



Join the mailing list!

Scan the QR code, visit our website

oxrss.web.ox.ac.uk

or email us at

committee@oxrss.ox.ac.uk



O_xRSS

ORGANISATIONS AT THE CAREERS FAIR FOR RESEARCHERS

Scientific R&D

Medpace

Website: careers.medpace.com/jobs

Make a difference in Clinical Trial Management: Meet the Medpace team at the Careers Conference for Researchers.

Are you interested in working in clinical research for a contract research organization? We are looking for graduates with PhD's to join our clinical trial management department in our London office.

We invite upcoming graduates, current PhD Students or Postdocs in life sciences subjects to meet the Medpace team on Thursday 26th March at the Careers Conference for Researchers. Visit our stand at the fair, network with our team and discover your next career in clinical research!

Tech

Microsoft

Website: careers.microsoft.com/v2/global/

At Microsoft, we're driven by a clear mission: to empower every person and every organization on the planet to achieve more. It's the foundation of how we partner with customers—co-creating, earning trust, and delivering real outcomes that help them achieve their goals.

Our culture is built on a growth mindset—learning never stops, curiosity is encouraged, and ambition is supported. We move with purpose, innovate responsibly, and build solutions people rely on and love. We measure success by shared progress—when our people grow, our teams perform, and our customers win.

When you join Microsoft, you'll do meaningful work that helps change the world—from advancing accessible technology to scaling AI responsibly for organizations of every size. Here, your ideas matter, your growth is supported, and your work helps shape what's next for everyone. Join us—and let's win and thrive together.

Media
Education**Oxford International Centre for Publishing
and Journalism, Oxford Brookes University**

Website: www.oxfordpublish.org

The Oxford International Centre for Publishing and Journalism is one of the leading institutes for media education in the world, with a reputation for innovation and excellence in teaching and research.

The Centre offers a range of postgraduate and undergraduate awards in publishing and journalism, and carries out academic research, professional development programmes and consultancy.

For more on our research, go to: www.brookes.ac.uk/research/units/tde/centres/oicp

Build what matters. Break what doesn't.

At **Microsoft**, your career begins with possibility.

Our Early in Profession opportunities are designed to help you grow with purpose, supported by teams working together to empower people and communities around the world. Whether you're joining from school, a bootcamp, or a career pivot, you'll be part of a collective effort where every role contributes to meaningful outcomes, and you'll be invited to learn, collaborate, and build alongside others.

You'll be guided by mentors and managers who help you shape your goals and stretch your potential. As you grow, you'll discover that your impact can ripple across teams, communities, and industries.

Starting your career at Microsoft means joining a culture of shared success, where collaboration fuels innovation and your journey can lead to endless possibilities.

PhD & MBA Opportunities

Visit our [Early in Profession](#) career page to explore Microsoft's PhD and MBA opportunities to build influence, accelerate your career, and work on high-impact projects - search openings in your region now.



Visit us at careers.microsoft.com



ORGANISATIONS AT THE CAREERS FAIR FOR RESEARCHERS

Tech

Oxford Dynamics

Website: <https://oxdynamics.com/>

Oxford Dynamics is a fast-growing, UK-headquartered deep-tech company building advanced AI and robotics for mission-critical environments. Our core platform, AVIS (A Very Intelligent System), is a multi-agent orchestration framework that combines deterministic models with advanced AI to fuse multi-modal data - text, imagery, telemetry and live sensor feeds etc. Rather than simply querying information, AVIS analyses complex operational data, generates recommended courses of action and can issue machine commands to autonomous and semi-autonomous systems in line with mission objectives.

Our embodied intelligence robotic platform, STRIDER, performs complex tasks autonomously in hazardous environments, protecting people and infrastructure while extending operational reach. Our ambition is simple but demanding: to converge AI and robotics so machines can sense, understand and act in complex, dynamic, real-world environments.

We work with defence and security organisations in the UK and internationally to help protect nations, critical infrastructure and lives. At Oxford Dynamics, every team member has meaningful impact. Regardless of role, you will contribute directly to technologies deployed in the real world and collaborate across AI research, engineering, robotics and product. Our work spans data platforms, autonomy-at-the-edge and mission software - designing, deploying and hardening systems for live operational environments.

Quantitative trading

Susquehanna

Website: <https://careers.sig.com/>

Susquehanna is a global quantitative trading firm powered by scientific rigor, curiosity, and innovation. Our culture is intellectually driven and highly collaborative, bringing together researchers, engineers, and traders to design and deploy impactful strategies in our systematic trading environment. To meet the unique challenges of global markets, Susquehanna applies machine learning and advanced quantitative research to vast datasets in order to uncover actionable insights and build effective strategies. By uniting deep market expertise with cutting-edge technology, we excel in solving complex problems and pushing boundaries together.



AT THE FOREFRONT OF QUANTITATIVE TRADING

At Susquehanna, you will learn from the brightest minds in the industry. You will be continuously challenged to solve some of the most complex problems in the financial markets. Game theory and decision science are integral to our trading, our education, and our culture. We are hiring for roles across trading, technology, and research.

Explore open roles



ORGANISATIONS AT THE CAREERS FAIR FOR RESEARCHERS

Research,
Education

Technische Universität Braunschweig



Website: www.tu-braunschweig.de/en/vacancies

Technische Universität Braunschweig is one of the strongest research universities in the state of Lower Saxony, Germany and is located in the centre of Europe's most active R&D region.

With 15,800 students and 3,800 employees, we offer a wide range of study programs, innovative and interdisciplinary teaching, research- and transfer opportunities, and excellent facilities. With a strong focus on engineering, TU Braunschweig addresses global challenges within the framework of four interdisciplinary core research areas: Mobility, Metrology, Engineering for Health & Future City.

We are looking for graduates and postgraduates from all academic areas, in particular from the STEM field.

Tech

The Innovation Game (Uncharted Industries)



Contact: contact@tig.foundation

The Innovation Game (TIG) is the first and only protocol designed to accelerate algorithmic innovation, by coordinating global intelligence. TIG is underpinned by a novel proof-of-work mechanism that allows for optimisation of the proof-of-work algorithms.

TIG combines its proof-of-work with a crypto-economic incentive structure to not only incentivise miners (benchmarkers) to identify the best performing algorithms, but to also motivate and reward anyone worldwide who can contribute to algorithmic innovation.

TIG creates an open, collaborative and competitive ecosystem harnessing computational efforts over a wide spectrum of real-world challenges, spanning artificial intelligence, cryptography, biomedical research and climate science. TIG is driven by the desire to direct the power of decentralised systems towards truly valuable purposes. By transcending limitations inherent in centralised entities, be they corporations or nation states, TIG can facilitate collaboration and achieve output on a scale previously impossible. Crucially, the protocol offers an alternative to the privatisation and monopolisation of algorithmic research, and accelerates open innovation in respect of science's most significant challenges.

Tech

TNG Technology Consulting UK



Website: www.tngtech.com

Consultants from TNG combine a strong academic background with hands-on software engineering to solve challenging real-world problems. Focusing on agile software development, artificial intelligence and DevOps & Cloud, we develop high-quality solutions. Come by and chat with us about what IT consulting across diverse industries is like.

We solve hard IT problems.



Software Consultant (m/f/d)



Internship position (m/f/d)



As a values-based IT consultancy, TNG combines the expertise of the best professionals in our industry with the latest technologies in order to develop tailored IT solutions. This involves providing our clients with consulting services as well as the technical implementation in three main areas:

- **Agile Software Development**
End-to-end delivery with Scrum/Kanban teams concentrating on legacy modernization and microservices, using Java, TypeScript, Python, C#, and more.
- **Artificial Intelligence**
From Generative AI and Computer Vision to industrial ML - we build and deploy scalable, production-ready models.
- **DevOps & Cloud**
Design, deployment, and migration of large-scale infrastructure to the cloud, as well as security audits.

We work in agile, cross-functional teams with flat hierarchies. Our company culture promotes personal responsibility, collaboration, and continuous learning. Our Oxford office is part of TNG's international network, with our headquarters in Germany. Join our team!



Careers Support for Oxford Researchers

DPhil students and fixed-term researchers working at the University of Oxford benefit from dedicated careers support through:

- CV and cover letter advice
 - Mock interviews
 - Career planning sessions
 - Job search strategy tips
 - Development programmes
 - Dedicated careers events
 - Regular newsletters
- ...and more!



www.careers.ox.ac.uk/researchers